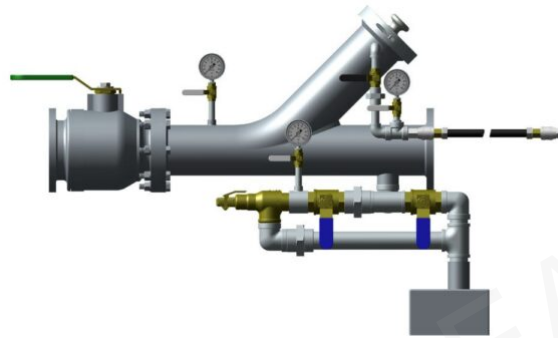


## ST-PIG/LNCHR-25AF – Pigs – Launcher – 2-1/2" & 6" (Astern Fueling)

SKU: ST-PIG/LNCHR-25AF



### Description

- The pig launcher is a "Y" assembly made from steel pipe with a valve system incorporated to direct air and fluid flow. It is used in the 2-1/2" and 6" astern fueling operation to launch the 2-1/2" and 6" polyurethane pig during blowdown operations. The pig is loaded into the top of the "Y" assembly which is then capped. Compressed air is directed in from behind the pig to blow it through the launcher, the astern fueling reel, and down the astern hose line. Any residual oil is drained through the valve system on the lower part of the "Y" assembly into a separate tank.

### Specification Table

drawing_number	D21140
Material	Steel
size_in	2-1/2