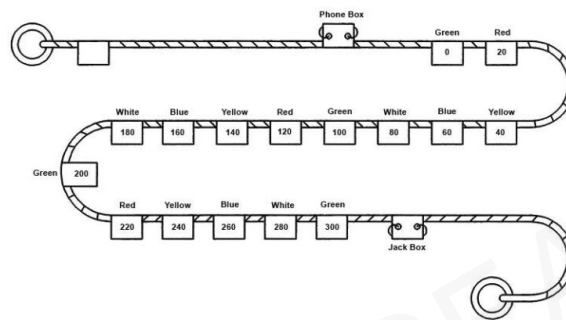


LN-PHN-BR/BR – Lines – Phone/Distance, Bridge-to-Bridge

SKU: LN-PHN-BR/BR



Description

- The bridge-to-bridge phone/distance line consists of 350 feet of 1-1/2" circumference 3 strand polypropylene line with a wire woven in each strand. A waterproof sound powered telephone jack box is connected to each end of the line. Sixteen markers are secured to the line at 20 foot intervals, each is marked with 5-digit high numerals to show the distance from the zero end of the line. A 200 foot lead line messenger is attached to the outboard end assembly. The bridge-to-bridge phone/distance line provides sound powered telephone circuit between the ship's bridges and a visual indicator of ships separation during conrep. Assembly does not include lead line messenger.

Specification Table

est_wt_lbs	85
drawing_number	17824
Material	Polypropylene Line
navsea_drawing_no	'53711-6695843 Assembly #1
pa_nsn-no	5995-01-394-7038