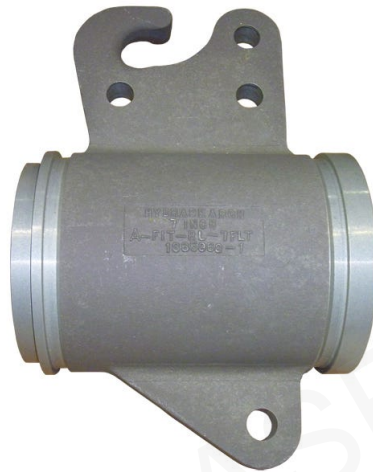


## A-FIT/RL-7-FLT – Riding Line Fittings, Flow Through

SKU: A-FIT/RL-7-FLT



### Description

- The flow through riding line fitting is a casting with a male split clamp coupling on one end and a female split clamp coupling on the other. It is used to join hose lengths and provide a means to suspend them from a trolley. It also provides a hook over which a riding line is passed to haul in the end of the hose rig during conventional fueling. To be used with aluminum split clamps.

### Specification Table

c	'1.06
d	'1.31
equal_to_aeroquip_no	72461-7D
pa_equal-to-global-no	72461-7D
pa_approx-weight-per-in-lbs	20
drawing_number	C13357-70
Material	Aluminum
navsea_drawing_no	803-1385969
pa_nsn-no	'4730-01-022-3966
size_in	'7