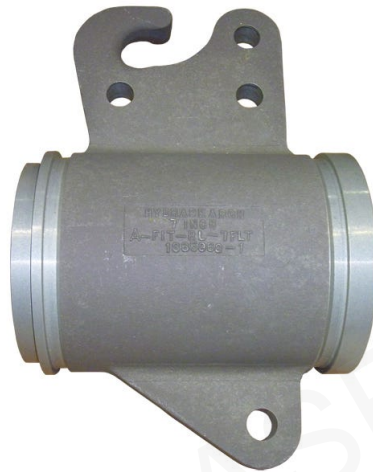


## A-FIT/RL-25-FLT – Riding Line Fittings, Flow Through

SKU: A-FIT/RL-25-FLT



### Description

- The flow through riding line fitting is a casting with a male split clamp coupling on one end and a female split clamp coupling on the other. It is used to join hose lengths and provide a means to suspend them from a trolley. It also provides a hook over which a riding line is passed to haul in the end of the hose rig during conventional fueling. To be used with aluminum split clamps.

### Specification Table

c	'0.94
d	'0.75
equal_to_aeroquip_no	72461-2 1/2D
pa_equal-to-global-no	72461-2-1/2D
pa_approx-weight-per-in-lbs	9
drawing_number	D14104
Material	Aluminum
navsea_drawing_no	803-2260819
size_in	'2-1/2
pa_notes	Dimensional Information Is For Reference Only. Variations From These Dimensions On Actual Parts May Occur As The Result Of Engineering Revisions.