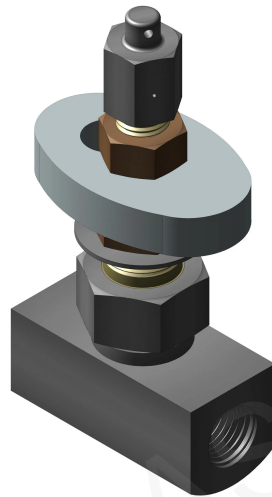


## 6GN301 – Female Union x Female Union

SKU: 6GN301



### Description

- Basic valve configuration works with MIL-DTL-24578. Working pressure is 6000 PSI.

### Specification Table

application	High Corrosion Resistant (Monel) – Hydraulic (System Fluid) High Corrosion Resistant (Monel) – Wog (System Fluid) Non-Magnetic (Stainless Steel) – Wog (System Fluid) Standard (Stain
pa_body-type	Inline
pa_inlet-connection	1/4" Npt Female
pa_outlet-connection	1/4" Npt Female
pa_references	Technical Products Valves Instrumentation & Adapters Valve Information (Catalog 1220).Pdf
pa_stem-condition	Vented
pa_type-1	Needle
pa_working-pressure-psi	6

**pa\_notes**

Additional Configurations Are Available For Special Applications Please Contact Our Sales Department With Your Requirements

HYDRASEARCH