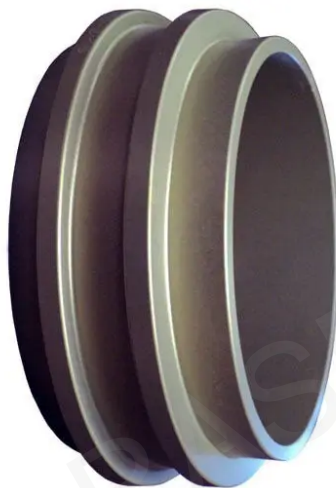


A-ADP-4MS-4MS – Male Split Clamp to Male Split Clamp

SKU: A-ADP-4MS-4MS



Description

- The male split clamp to male split clamp adapter provides a 4" or 6" connection for female split clamp end fittings to female split clamp end fittings. To be used with aluminum split clamps.

Specification Table

c	'3.70
d	'4.81
drawing_number	C15980
Material	Aluminum